

# Schaerer Ambiente 2

Model 15 SO 2 (Coffee, Tea, Steam)

January 2008



## Basic configuration

Spouts: coffee / hot water / steam	1 / 1 / 1
Boiler: coffee (3kW) / hot water (3kW) / steam (3kW)	1 / 1 / 1
Grinders / DECAF functions	2 / 1
Programmable product selection	up to 32 different products

## Connections

Voltage / power / fuse protection	400 V 3NAC, 9.3 kW, 16 A
Water connection / water outlet	G ½ " max 3 bar / min Ø 40mm
Water hardness	5°-7° dh / 8°-12° fh

## Dimensions

Width / depth / height	420 / 510 / 755 mm
Weight	about 45 kg

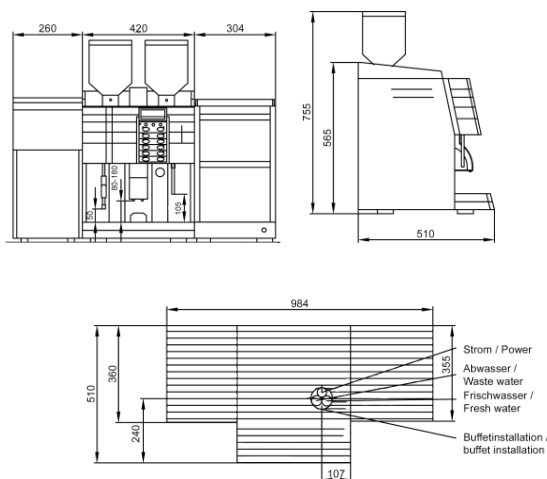
## Output per hour (approximate)

Espresso (Cup of 50 - 60ml)	180
Coffee (Cup of 120ml)	140
Hot water (litre)	20

## Options

Moveable base
Selfservice (lockable)
Fresh and used water tanks for the correspond mobility
Connection to all commercial invoicing systems
Cup warmer (Connections 230VAC / 10A)

## Dimensions



## Colours

Illustrations may not reflect actual colour

 Silver

Differences between the offered machine and the picture/configuration are possible.

M. Schaerer Ltd.  
Gewerbstrasse 15  
CH - 3302 Moosseedorf  
Phone +41 (0)31 858 51 11  
Fax +41 (0)31 858 51 40  
info@schaerer.com  
www.schaerer.com

  
coffee comes to life

SWISS MADE